



## **Rabbit anti PLAC1(Paired Y147) Polyclonal Antibody**

**Alternative Name(s): placenta-specific 1**

### **Order Information**

- **Description:** PLAC1(Paired Y147)
- **Catalogue:** 620-410
- **Lot:** See label
- **Size:** 100ug/200ul
- **Host:** Rabbit
- **Clone:** nan
- **Application:** IHC(P), WB
- **Reactivity:** Hu

### **ANTIGEN PREPARATION**

A synthetic peptide corresponding to the NON- phosphorylation site at Tyrosine 147 surrounding the epitope - EKCYEVF- of human Placenta-specific 1 protein. This sequence is derived from human origin

### **BACKGROUND**

The PLAC1, a placenta-specific gene, which encodes a putative cell surface protein, is highly expressed in placenta, testis, and wide range of human malignancies, most frequently in breast cancer, and essentially involved in cancer cells proliferation, migration and invasion. The activation of PLAC1 is selectively controlled by ubiquitous transcription factor SP1 and positively correlated between PLAC1 and ER-alpha in breast cancer. PLAC1 is also expressed in human hepatocellular cancer tissues as well as in several other types of cancer tissues and/or tumor cell lines. PLAC1 represents a new class of tumor associated antigen with restricted expression in placenta and cancer tissues, that may serve as a target for cancer vaccination.

### **PURIFICATION**

The Rabbit IgG is purified by Epitope Affinity Purification

### **FORMULATION**

This affinity purified antibody is supplied in sterile Tris-buffered saline (pH7.2) containing antibody stabilizer

### **SPECIFICITY**

This antibody recognizes ~22 kDa of PLAC1 protein WITHOUT phosphorylation site of Tyrosine 147. It cross-reacts to human, not the other species.

### **STORAGE**

The antibodies are stable for 24 months from date of receipt when stored at -20oC to -70oC. The antibodies can be stored at 2oC-8oC for three month without detectable loss of activity. Avoid repeated freezing-thawing cycles.

### **APPLICATIONS/SUGGESTED WORKING DILUTIONS\***

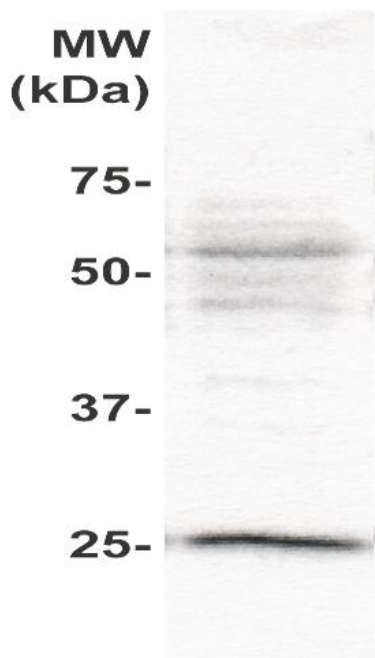
- Western Blot: 0.1-1 µg/ml
- ELISA: 0.01-0.1 µg/ml
- Immunoprecipitation: 2-5 µg/ml
- IHC: 2-10 µg/ml
- Flow cytometry: Not tested
- Molecular Weight: 36.0
- Positive Control: Kidney Tissue
- Cellular Location: Cell Membrane

\*Optimal dilutions should be determined by researchers for the specific applications.

### **FOR RESEARCH USE ONLY.**

AbboMax, Inc 2528 Qume Drive, Suite 8, San Jose, California 95131, USA  
1 408-573-1898 (Tel). 1 408-573-1858 (Fax). [www.abbomax.com](http://www.abbomax.com) [info@abbomax.com](mailto:info@abbomax.com)

## DATA ATTACHMENTS



Western Blot: The cell lysate derived MCF-7 was separated onto 12% SDS-PAGE, transferred onto NC membrane, and immunoblotted by Rabbit anti Non-Phosphospecific PLAC1 (Paired Y147) (Cat#620-410) at 1:500. An immunoreactive major band was observed at ~22 kDa.

## REFERENCES

### FOR RESEARCH USE ONLY.

AbboMax, Inc 2528 Qume Drive, Suite 8, San Jose, California 95131, USA  
1 408-573-1898 (Tel). 1 408-573-1858 (Fax). [www.abbomax.com](http://www.abbomax.com) [info@abbomax.com](mailto:info@abbomax.com)